



comparing landscapes
formal landscape design

A Division of W&S Storm Enterprises, Inc.
 27 24500
 WWW.GARDENPATH.COM
 P.O. Box 2282, St. Helena, CA 94574
 707.764-2088

Page Type
PLANTING PLAN

RANCHO DOMINGUEZ TOWNHOMES
 YORBA LINDA, CA

Date: 8/8/17

Rev.

Project
 Drawn by
 T&P

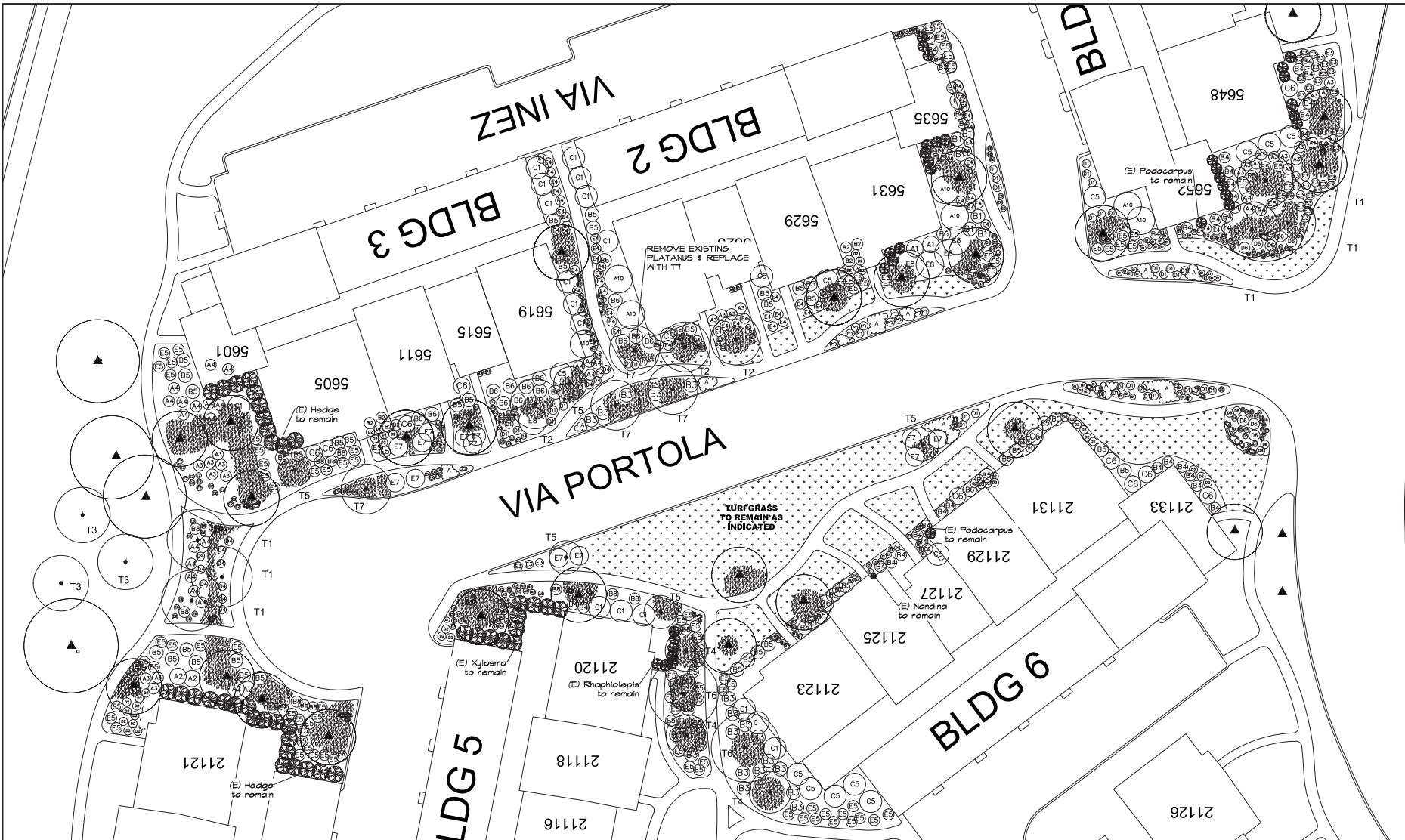
Scale
 1/8" = 1'-0"
 UNLESS OTHERWISE INDICATED

General Notes
 Measurements, dimensions, quantities, etc. are approximate and for information only. The contractor shall verify the information and coordinate with the applicable state and local building codes and regulations prior to the start of work.



PAGE NO:

L2.1



SHRUB LEGEND

| SYM | BOTANICAL | COMMON | SIZE | Count | BLOOMCOLOR | BLOOMTIME |
|-----|---------------------------------|------------------------------|----------|-------|----------------|-----------------|
| A1 | <i>Pavonia pratincola</i> | Yellow Madia | 5 Gallon | 2 | Yellow | Spring to Fall |
| A10 | <i>Grewia long-joint</i> | NCN | 5 Gallon | 7 | Red | Spring/Summer |
| A2 | <i>Crocosmia regina</i> | Marble Queen Mirror Plant | 5 Gallon | 4 | White | NHS |
| A3 | <i>Alca zinnifolia</i> | Golden Fossil Aloe | 1 Gallon | 27 | Yellow/Green | None |
| A4 | <i>Agave attenuata</i> | Fossil Agave | 5 Gallon | 23 | White | None |
| A5 | <i>Alca vera</i> | Medicinal Aloe | 1 Gallon | 44 | Yellow | Spring/Summer |
| B1 | <i>Phlomis frutescens</i> | Jerusalem Sage | 5 Gallon | 6 | Yellow | Spring/Summer |
| B2 | <i>Podocarpus nana</i> | Burns's Foot | 5 Gallon | 7 | Lavender | None |
| B3 | <i>Grewia rostrata</i> | Nothia Greasilia | 5 Gallon | 22 | Deep Pink | Spring |
| B4 | <i>Westringia frutescens</i> | Morning Light Coast Rosemary | 5 Gallon | 39 | White | Year-round |
| B5 | <i>Cornus 'Wynita Wonder'</i> | Vanigatit Australian Fuchsia | 5 Gallon | 45 | Rose Pink | Winter / Spring |
| B6 | <i>Westringia 'Blue Gem'</i> | Blue Gem Coast Rosemary | 5 Gallon | 18 | Lavender/Blue | Year-round |
| B7 | <i>Diarrhea cordata</i> | Cassia Blue Flex Lily | 1 Gallon | 29 | Light Blue | Spring |
| B8 | <i>Buddleia 'Buzz Lavender'</i> | Butterfly Buzz Buzz Lavender | 1 Gallon | 12 | Lavender | Summer/Fall |
| C1 | <i>Rhamnus californica</i> | Eye Case Corrobary | 5 Gallon | 17 | Greenish white | Spring |
| C2 | <i>Podocarpus grandifolius</i> | Fern Pine | 5 Gallon | 13 | NHS | NHS |
| C3 | <i>Phoradendron 'Compact'</i> | Compact Laurel Cherry | 5 Gallon | 13 | White | Winter / Spring |
| C4 | <i>Podocarpus elongatus</i> | Icee Blue Yucca | 5 Gallon | 14 | NHS | NHS |

SHRUB LEGEND

| SYM | BOTANICAL | COMMON | SIZE | Count | BLOOMCOLOR | BLOOMTIME |
|-----|--------------------------------|---------------------------|----------|-------|----------------|-----------------|
| D1 | <i>Phoradendron australe</i> | Eastern Canyon | 5 Gallon | 26 | Teal | Summer / Fall |
| D2 | <i>Asparagus meyeri</i> | Fossil Fern | 1 Gallon | 43 | NHS | NHS |
| D3 | <i>Sesleria autumnalis</i> | Autumn Moor Grass | 1 Gallon | 70 | Greenish White | Spring |
| D4 | <i>Trichium drimacanthus</i> | Germender Sage | 1 Gallon | 14 | Magenta | Summer |
| D5 | <i>Acrobia togaria</i> | Throne Creeper | 1 Gallon | 12 | Yellow | Spring/Summer |
| D6 | <i>Veronica buxifolia</i> | Green Maid Verbena | 1 Gallon | 8 | Purple | Spring/Summer |
| D7 | <i>Aeschynomene parviflora</i> | Green Flatters | 1 Gallon | 28 | Yellow | Spring/Summer |
| D8 | <i>Sida chinensis</i> | Germender Sage | 1 Gallon | 4 | Dark Blue | Year Round |
| E1 | <i>Tillandsia violacea</i> | Variegated Society Garlic | 1 Gallon | 63 | Lavender | Spring / Summer |
| E2 | <i>Clivia miniata</i> | Orange Clivia | 1 Gallon | 15 | Light Orange | Winter / Spring |
| E3 | <i>Buddleia frutescens</i> | Orange Stakee Budding | 1 Gallon | 37 | Orange | Spring / Summer |
| E4 | <i>Parthenocissis vitacea</i> | Deer's Elopment Flod | 1 Gallon | 60 | Lavender | None |
| E5 | <i>Cotinus coccinea</i> | Green Caprol Nut/Flum | 5 Gallon | 107 | White | Year-round |
| E6 | <i>Calceolaria spectabilis</i> | Rock Purslane | 1 Gallon | 25 | Purple | Spring/Fall |
| E7 | <i>Myoporum parviflorum</i> | Creeping Myoporum | 1 Gallon | 13 | Pink | Year-round |
| E8 | <i>Acacia nodiflora</i> | Acacia Low Boy | 5 Gallon | 5 | Yellow | Spring |

TREE LEGEND

| SYM | BOTANICAL | COMMON | SIZE | Count |
|-----|----------------------------|-------------------|------------|-------|
| T1 | <i>Orignia stricta</i> | Indiantone Tree | 15' Gallon | 1 |
| T2 | <i>Taxaria confusa</i> | Bridal Box | 15' Gallon | 3 |
| T3 | <i>Fraxinus uhdei</i> | Shamel Ash | 15' Gallon | 3 |
| T4 | <i>Agave flexilis</i> | Peppermint Willow | 15' Gallon | 3 |
| T5 | <i>Cornus occidentalis</i> | Pepper Redbud | 15' Gallon | 5 |
| T6 | <i>Ulmus parviflorus</i> | Evergreen Elm | 15' Gallon | 2 |
| T7 | <i>Geijera parviflora</i> | Australian Willow | 15' Gallon | 4 |

GROUND COVER LEGEND

| SYM | BOTANICAL | COMMON | SIZE | SPACING |
|-----|--------------------------|----------|-----------|---------|
| A | <i>Dymondia maritima</i> | Dymondia | 18" x 18" | 6' x 6' |

